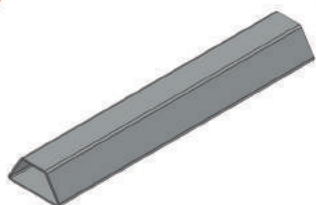


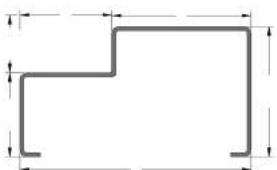
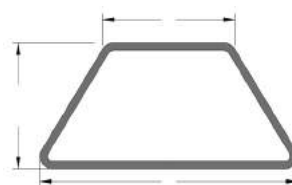
# PERFILES ORNAMENTACIÓN

Ofrecemos una amplia variedad de perfiles de ornamentación para puertas, ventanas, pasamanos y rejas fabricados en acero Cold Rolled bajo norma JIS G3141 SPCC (calidad Comercial) y en longitudes de 6 metros.



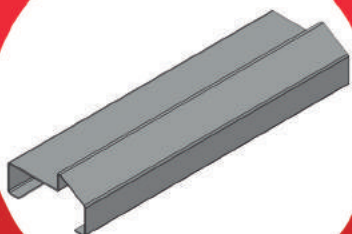
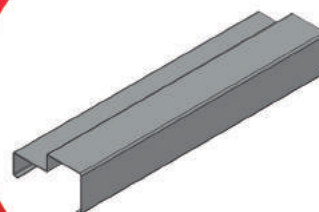
## Pasamanos

Espesores: 0,80mm y 0,85mm



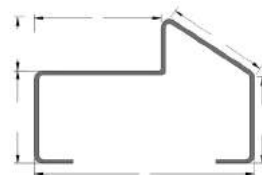
## Marco Puerta Corriente

Espesores: 0,85mm, 1,00mm  
y 1,10mm



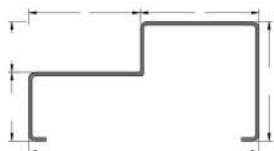
## Marco puerta tipo aluminio

Espesores: 0,85mm, 1,00mm y  
1,10 mm



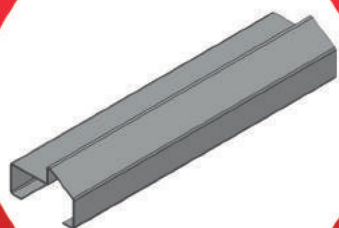
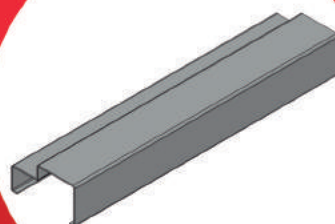
# PERFILES

## ORNAMENTACIÓN



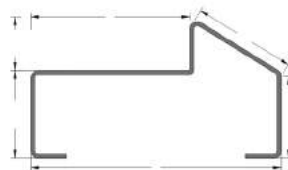
### Marco Ventana Corriente

Espesores: 0,85mm, 1,00mm  
y 1,10mm



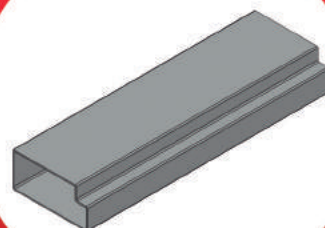
### Marco Ventana tipo Aluminio

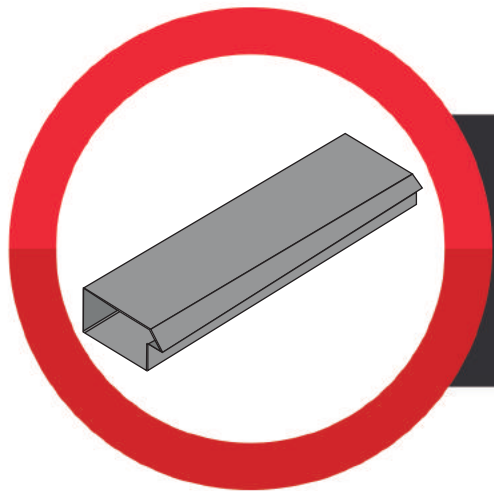
Espesores: 0,85mm, 1,00mm y  
1,10mm



### Peinazo Corriente

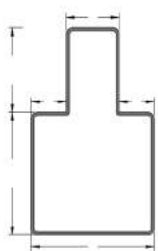
Espesores: 1,00mm y 1,10mm





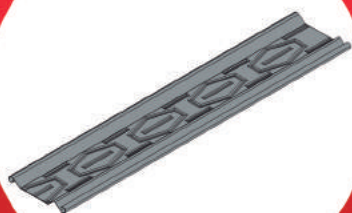
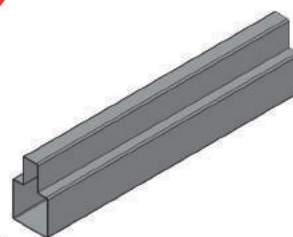
### Peinazo tipo Aluminio

Espesores: 1,00mm y 1,10mm



### T Ventana Corriente

Espesores: 0,80mm y 0,85mm



### Fleje Cortina Cold Rolled

#### Presentaciones

- Fleje Angosto Corriente
- Fleje Angosto Estampado
- Fleje Ancho Corriente
- Fleje Ancho Estampado

Espesores: 0,55mm



### Fleje Cortina Galvanizado

Espesores: 0,55mm

